

# Boxwood Blight Identification Guide

## INITIAL SYMPTOMS



Dark leaf spots (left) and spores of the boxwood blight fungus (*Calonectria pseudonaviculata*) on lower leaf surfaces (right).

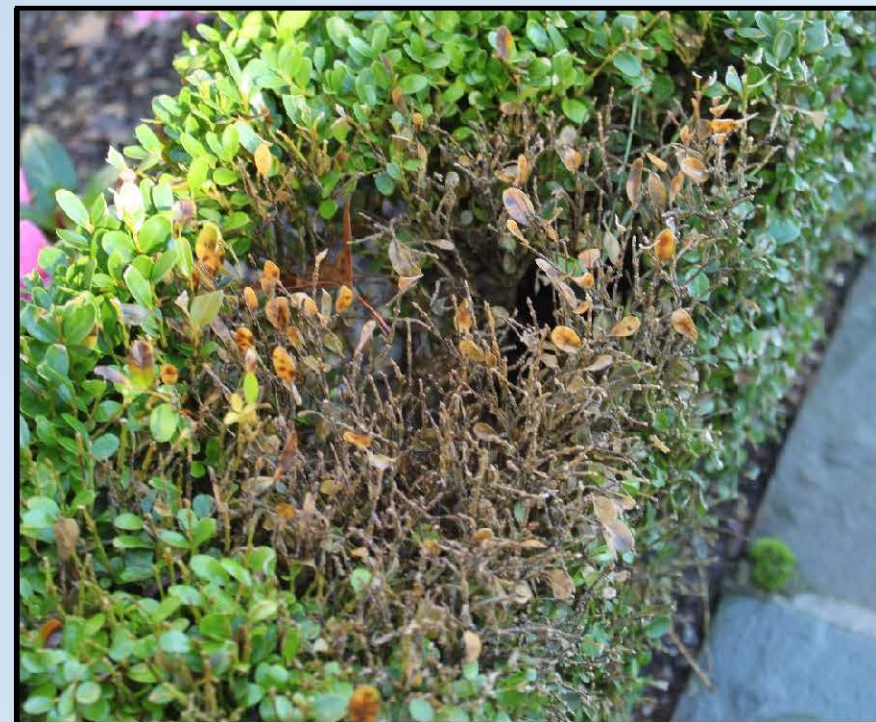


Zonate leaf lesions.



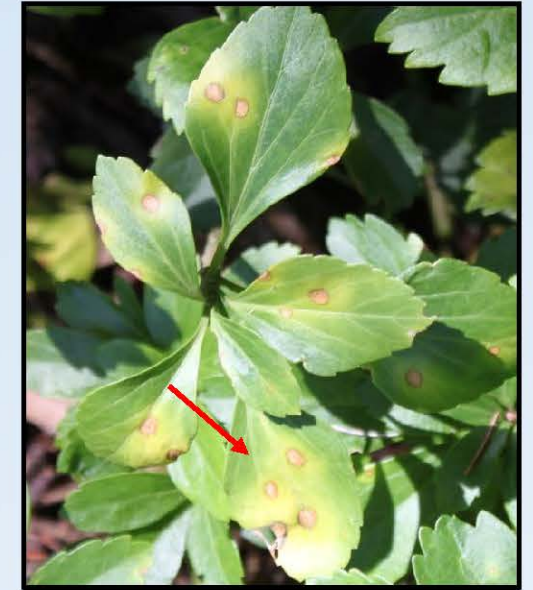
Black stem lesions.

## LANDSCAPE AND NURSERY SYMPTOMS



Foliar and stem symptoms result in severe defoliation leading to decline and death of boxwood plants. Boxwood blight affects all species of boxwood, pachysandra, and sarcococca.

All photos from CAES.  
Funding from FY2013 Farm Bill, USDA-APHIS.



Infected boxwood and pachysandra in the landscape (left) and leaf spots on pachysandra (right).



Stem lesions on pachysandra (left) and fungal spores on lower surface of pachysandra leaves (right).

For more information:  
[www.ct.gov/caes/boxwoodblight](http://www.ct.gov/caes/boxwoodblight)  
[www.boxwoodblight.org](http://www.boxwoodblight.org)